

ATELIER PURCELL

TIPPED LEATHER OLIVE 2002-3000



Description:

This full grain aniline dyed leather features a two tone tipped grain effect and luxuriously soft touch. The contemporary color line allows for the most sophisticated furniture creations. Only the finest European hides are hand selected, allowing for clean surfaces and high yields. With its' durable protective finish, this leather is suitable for most hospitality, contact and luxury residential environments.

Collection:

Tipped Leather

Composition:

Premium European Hides

Average Size:

50 - 54 square feet

Thickness:

0.9 - 1.1 mm (ASTM D 1813)

Country of Origin:

Italy

Freight Code:

EU04

Characteristics:

Type of Tanning:	Chrome Tanned
Type of Finish:	Semi Aniline
Classification:	Corrected Grain / High Traffic
Texture:	Full Grain
Flammability	PASS

Testing & Certifications

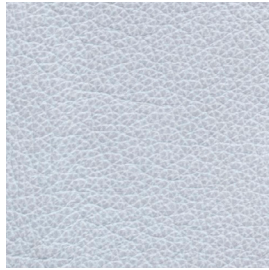
CA117 2013
NFPA 260

ATELIER PURCELL

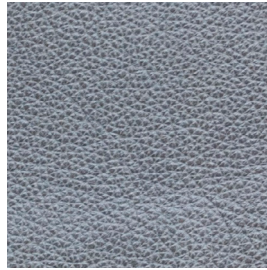
COLORWAY



MIST 2002-1210



STERLING 2002-1120



NIGHT SKY 2002-1190



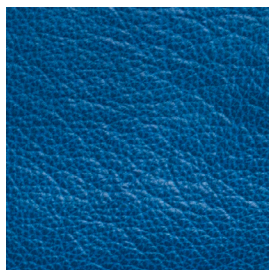
MOCHA 2002-2202



OLIVE 2002-3000



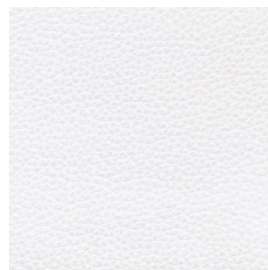
SAHARA 2002-3610



MARINA 2002-5410



CITRUS 2002-8410



BEIGE 2002-9400

NOTES: