

ATELIER PURCELL

TIPPED LEATHER MOCHA 2002-2202

**Description:**

This full grain aniline dyed leather features a two tone tipped grain effect and luxuriously soft touch. The contemporary color line allows for the most sophisticated furniture creations. Only the finest European hides are hand selected, allowing for clean surfaces and high yields. With its' durable protective finish, this leather is suitable for most hospitality, contact and luxury residential environments.

Collection:

Tipped Leather

Composition:

Premium European Hides

Average Size:

50 - 54 square feet

Thickness:

0.9 - 1.1 mm (ASTM D 1813)

Country of Origin:

Italy

Freight Code:

EU04

Characteristics:

Type of Tanning:

Chrome Tanned

Type of Finish:

Semi Aniline

Classification:

Corrected Grain / High Traffic

Texture:

Full Grain

Flammability

PASS

Testing & Certifications

CA117 2013

NFPA 260

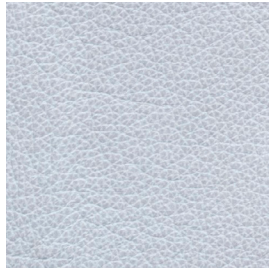
NOTES: DISPLAYED COLOUR AND HUE MAY VARY FROM ACTUAL FABRIC. PLEASE CONTACT YOUR LOCAL SALES ASSOCIATE TO REQUEST A SAMPLE.

ATELIER PURCELL

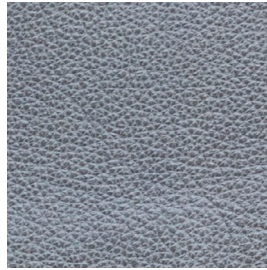
COLORWAY



MIST 2002-1210



STERLING 2002-1120



NIGHT SKY 2002-1190



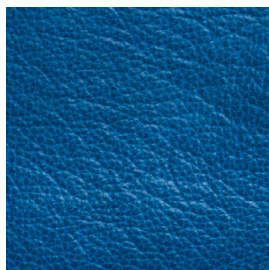
MOCHA 2002-2202



OLIVE 2002-3000



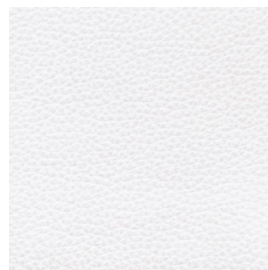
SAHARA 2002-3610



MARINA 2002-5410



CITRUS 2002-8410



BEIGE 2002-9400

NOTES: