**Description:**

An elegant smooth grain leather with a soft silk hand. It has a very slight sheen to creating a chic sophisticated look. This Italian tannery works with the fashion industry throughout Europe providing a wide selection of fashion forward colors.

**Collection:**

Smooth Leather

**Composition:**

Premium European Hides

**Average Size:**

22 - 24 square feet

**Thickness:**

1.0 - 1.2 mm (ASTM D 1813)

**Country of Origin:**

Italy

**Freight Code:**

EU04

---

**Characteristics:**

Type of Tanning:

Chrome Tanned

Type of Finish:

Semi Aniline

Classification:

Corrected Grain / Medium Traffic

Texture:

Lightly Buffed

Flammability

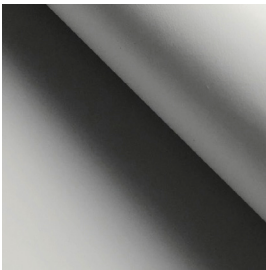
PASS

**Testing & Certifications**

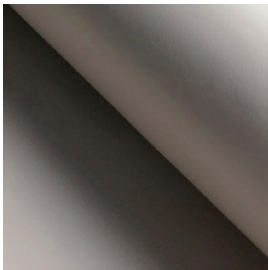
CA117 2013

EN ISO 1021-1:2014 Cigarette

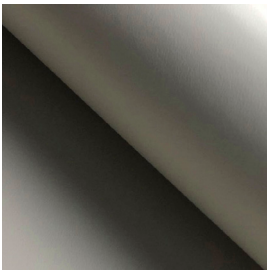
EN ISO 1021-2:2014 Match



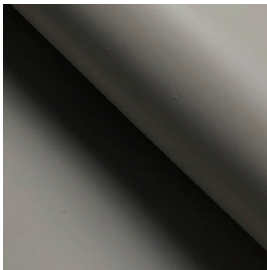
NORDIC WHITE 01106



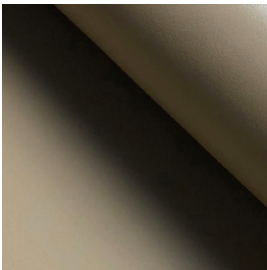
ALABASTER 01107



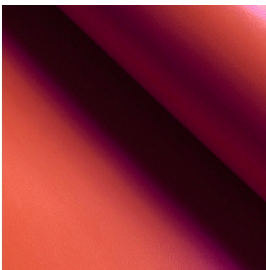
VANILLA 01108



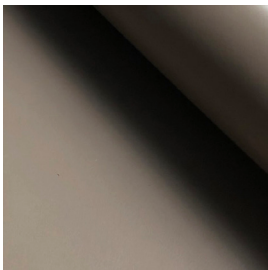
FOG 08054



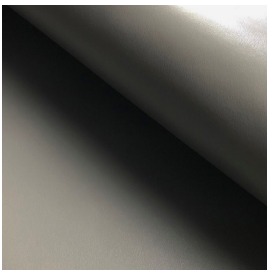
DESERT 01112



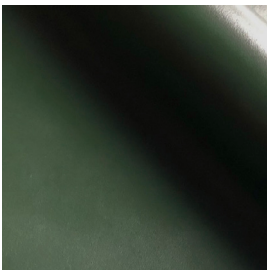
ORANGE 0586



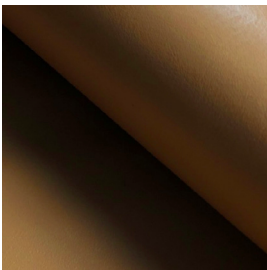
PORTOBELLO 03312



SHARK 08064



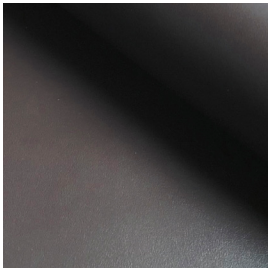
BRITISH RACING GREEN 06091



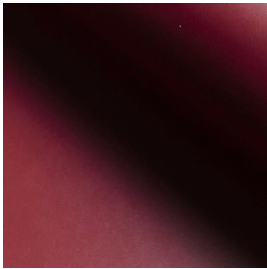
CARAMEL 01113



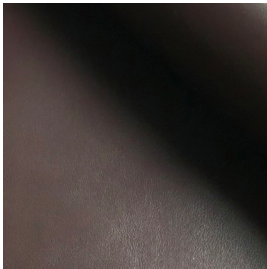
TERRACOTTA 03339



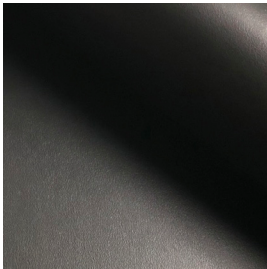
INK 07123



BURGUNDY 04143



CACAO 03318



ONYX 08063

NOTES: