

# ATELIER PURCELL

## FINE NUBUCK LEATHER ARCTIC BLUE 0842

**Description:**

The extremely soft tactile hand of its surface makes our Nubuck unique. The meticulous buffing carried out on its surface provide delicacy and an inimitable class. Combined with an elegant selection of rich colours this article is impossible not to love at first touch.

**Collection:**

Fine Nubuck Leather

**Composition:**

Premium European Hides

**Average Size:**

50 - 54 square feet

**Thickness:**

1.0 - 1.2 mm (ASTM D 1813)

**Country of Origin:**

Italy

**Freight Code:**

EU04

**Characteristics:**

Type of Tanning:	Chrome Tanned
Type of Finish:	Nubuck
Classification:	Smooth / Medium traffic
Texture:	Buffed
Flammability	PASS

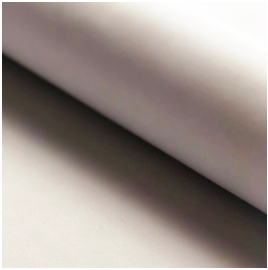
**Testing & Certifications**

CA117 2013  
EN ISO 1021-1:2014 Cigarette  
EN ISO 1021-2:2014 Match

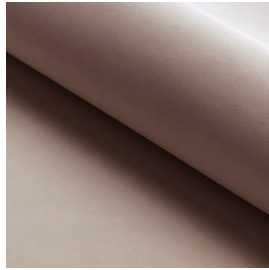
# ATELIER PURCELL

---

## COLORWAY



ICE 01015



LATTE 0854



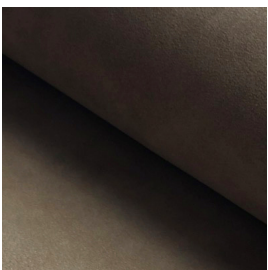
CREAM 0197



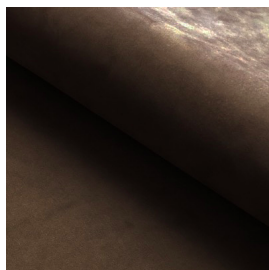
WARM CLAY 06048



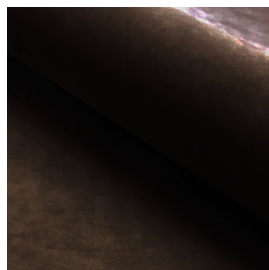
CAMEL 03403



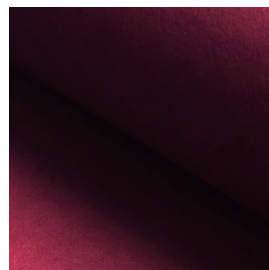
CAPPUCCINO 03388



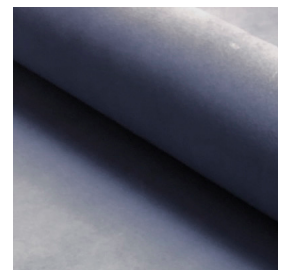
COFFEE 03009



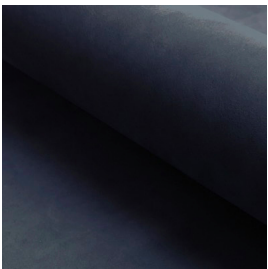
BITTER CHOCOLATE 03396



BORDEAUX 04168



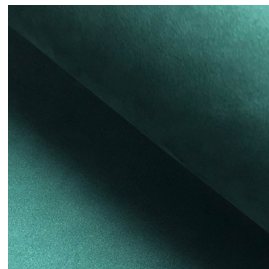
BLUE STEEL 0780



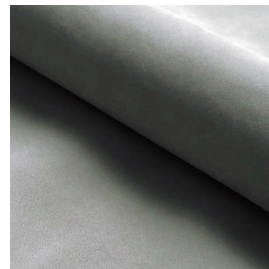
ARCTIC BLUE 0842



MIDNIGHT BLUE 07120



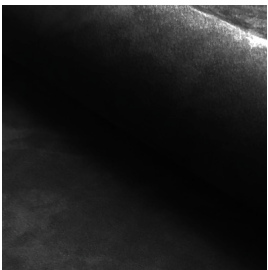
JADE 06099



PLATINUM 0855



CHARTREUX 08089



LICORICE 08018

---

NOTES: