

ATELIER PURCELL

FINE NUBUCK LEATHER BLUE STEEL 0780

**Description:**

The extremely soft tactile hand of its surface makes our Nubuck unique. The meticulous buffing carried out on its surface provide delicacy and an inimitable class. Combined with an elegant selection of rich colours this article is impossible not to love at first touch.

Collection:

Fine Nubuck Leather

Composition:

Premium European Hides

Average Size:

50 - 54 square feet

Thickness:

1.0 - 1.2 mm (ASTM D 1813)

Country of Origin:

Italy

Freight Code:

EU04

Characteristics:

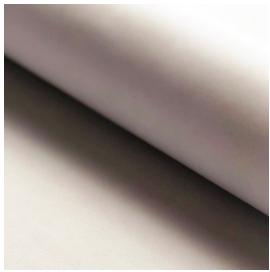
Type of Tanning:	Chrome Tanned
Type of Finish:	Nubuck
Classification:	Smooth / Medium traffic
Texture:	Buffed
Flammability	PASS

Testing & Certifications

CA117 2013
EN ISO 1021-1:2014 Cigarette
EN ISO 1021-2:2014 Match

ATELIER PURCELL

COLORWAY



ICE 01015



LATTE 0854



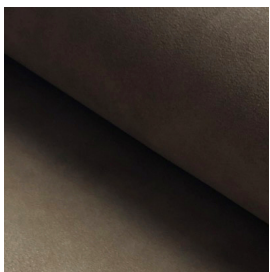
CREAM 0197



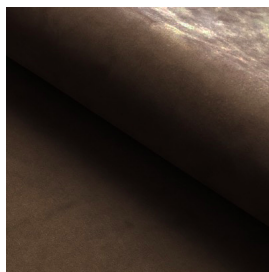
WARM CLAY 06048



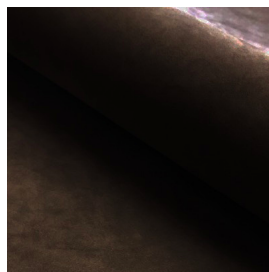
CAMEL 03403



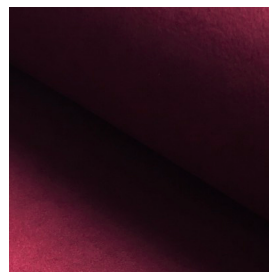
CAPPUCCINO 03388



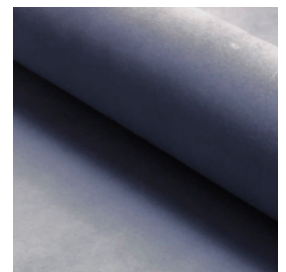
COFFEE 03009



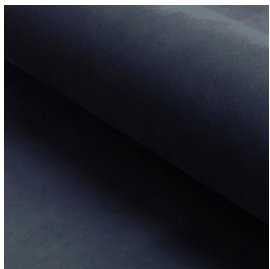
BITTER CHOCOLATE 03396



BORDEAUX 04168



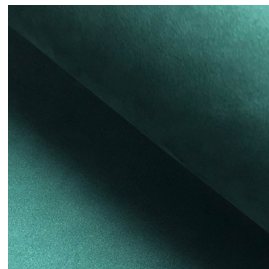
BLUE STEEL 0780



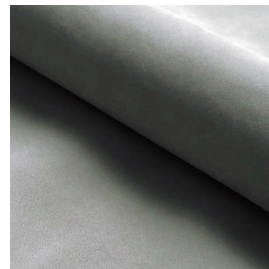
ARCTIC BLUE 0842



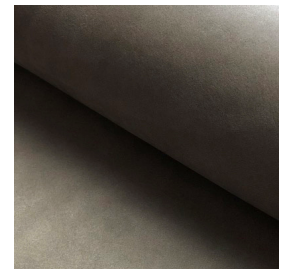
MIDNIGHT BLUE 07120



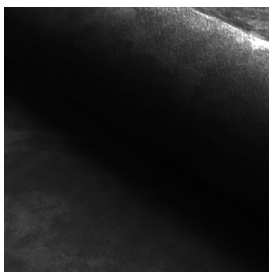
JADE 06099



PLATINUM 0855



CHARTREUX 08089



LICORICE 08018

NOTES: