

Description:

Loggia draws inspiration from the façades of Tuscany’s Cathedrals. Adorned with multi-level loggias, these buildings are articulated by the ever changing light and shadow. This designs two-tone combination gives it a contemporary yet and sophisticated appeal.

Collection:

Loggia

Composition:

20% Cotton, 10% Linen,
20% Poycarbonate, 15%Polyester,
35% Viscose

Width:

55” (140cm)

Vertical Repeat:

none

Horizontal Repeat:

none

Country of Origin:

Italy

Freight Code:

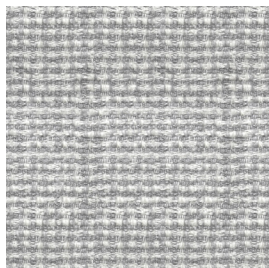
EU02

Characteristics:

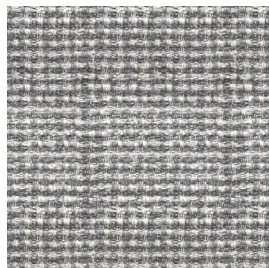
Resistance to PILLING after 2000 cycles	3/4
Martindale	25.000
Light fastness	5
Flammability	PASS NOT PASS PASS

Testing & Certifications

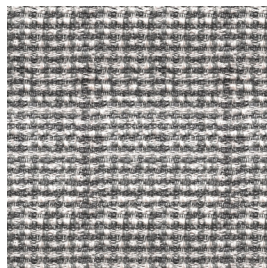
EN ISO 12945-2
EN ISO 12947-2
EN ISO105B02
BS5852 Cigarette
BS5852 Match
CAL TB 117



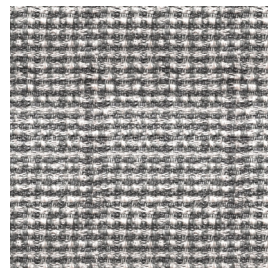
PISA WLO1201



LUCCA WLO1302



SIENA WLO1403



PISTOIA WLO1504

NOTES: