

**Description:**

Loggia draws inspiration from the façades of Tuscany’s Cathedrals. Adorned with multi-level loggias, these buildings are articulated by the ever changing light and shadow. This designs two-tone combination gives it a contemporary yet and sophisticated appeal.

**Collection:**

Loggia

**Composition:**

20% Cotton, 10% Linen,  
20% Poycarbonate, 15%Polyester,  
35% Viscose

**Width:**

55” (140cm)

**Vertical Repeat:**

none

**Horizontal Repeat:**

none

**Country of Origin:**

Italy

**Freight Code:**

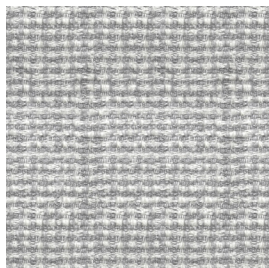
EU02

**Characteristics:**

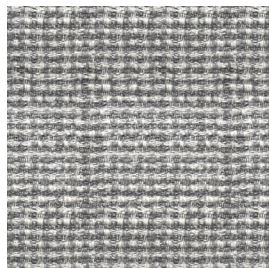
Resistance to PILLING after 2000 cycles	3/4
Martindale	25.000
Light fastness	5
Flammability	PASS NOT PASS PASS

**Testing & Certifications**

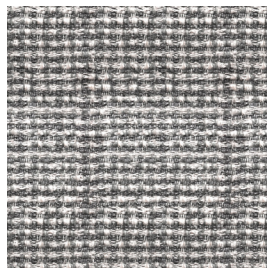
EN ISO 12945-2
EN ISO 12947-2
EN ISO105B02
BS5852 Cigarette
BS5852 Match
CAL TB 117



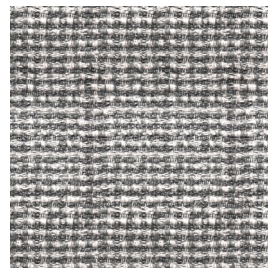
*PISA WLO1201*



*LUCCA WLO1302*



*SIENA WLO1403*



*PISTOIA WLO1504*

---

NOTES: