

**Description:**

Kittan has a mismatched weave creating a textured non-uniform surface which is juxtaposed with sophisticated selection of colours. From a distance this fabric appears monochrome, but as you approach it a second colour is revealed making it both subtle and intriguing.

**Collection:**

Kittan

**Composition:**

20% Cotton, 10% Linen,  
25%Polyester, 45% Viscose

**Width:**

55" (140cm)

**Vertical Repeat:**

approx 2" (5 cm)

**Horizontal Repeat:**

approx 1 3/4" (4.4 cm)

**Country of Origin:**

Italy

**Freight Code:**

EU01

**Characteristics:**

Resistance to PILLING after 2000 cycles

3/4

Martindale

25.000

Light fastness

5

Flammability

PASS  
NOT PASS  
NOT PASS

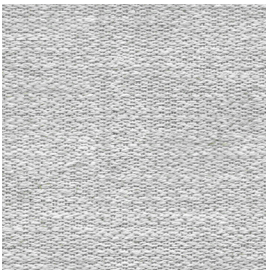
**Testing & Certifications**

EN ISO 12945-2

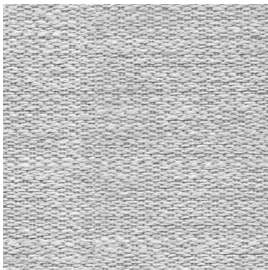
EN ISO 12947-2

EN ISO105B02

BS5852 Cigarette  
BS5852 Match  
CAL TB 117



*RHODES DM00201*



*SAMOS DM00302*



*CRETE DM00503*

---

NOTES: