



ATELIER PURCELL

FINISHES 2024



EBONIZED WALNUT - EWO7



NATURAL WALNUT - NW08



NATURAL CERUSED WALNUT - NCW09



SAHARA OAK - SO17



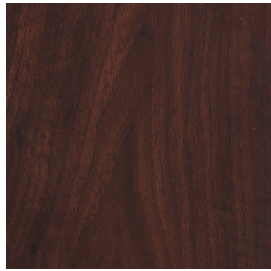
NATURAL OAK - NO20



AGED OAK - AO26



CARBON WALNUT - CW13



DARK WALNUT - DW18



LONDON FOG OAK - LFO1



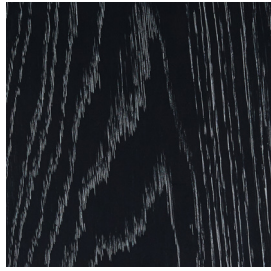
WINTER FROST OAK - WFO42



BLEACHED CERUSED OAK - BCO28



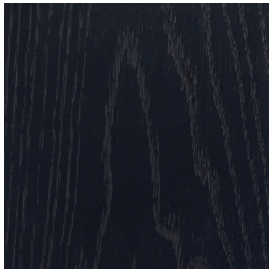
ESPRESSO CERUSED OAK - ECO10



ONYX CERUSED OAK - OCO11



ASHEN CERUSED OAK - ACO12



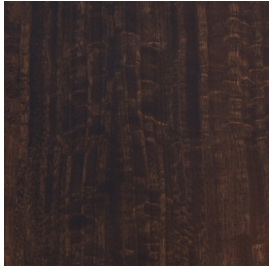
ONYX OAK - OO15



SNOWDRIFT OAK - SDO19



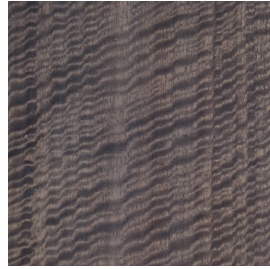
NORDIC OAK - NO16



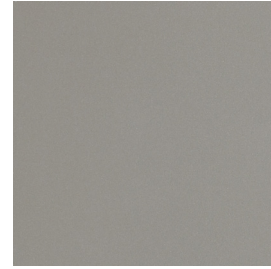
UMBER EUCALYPTUS - UE14



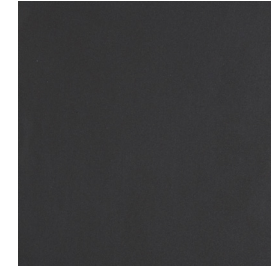
SILVER EUCALYPTUS - SE23



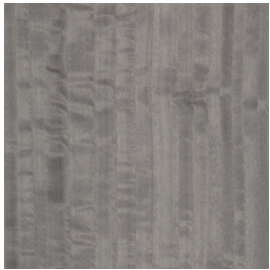
SLATE GREY EUCALYPTUS - SGE25



DUNE LACQUER - DLO2



GALAXY LACQUER - GLO4



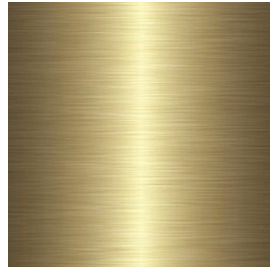
FOSSIL GREY EUCALYPTUS - FGE43



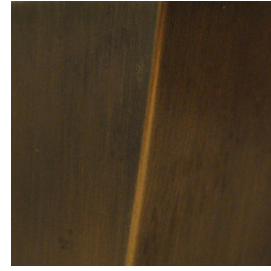
BRONZE - SMB30



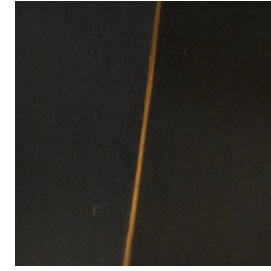
DARK BRONZE - SMDB31



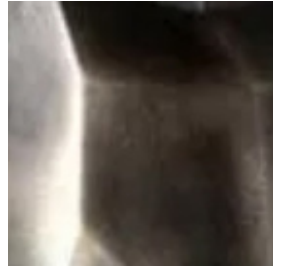
BRUSHED BRASS - SMPB33



LIGHT PATINA BRONZE - HPLB36



DARK PATINA BRONZE - HPDB37



*PATINA SILVER BRONZE - HPSB41 **



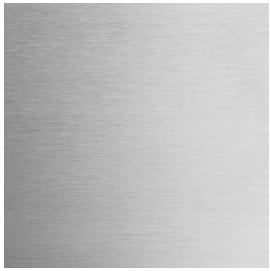
OBSIDIAN - SMO34



BRUSHED STAINLESS STEEL - SMBS35

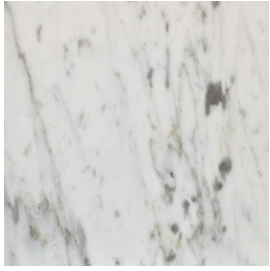


POLISHED ALUMINUM - SMPA38



BRUSHED ALUMINUM - SMBA39

*Hand Patinated Silver Bronze only available for Horta Consoles



*WHITE CARRARA**



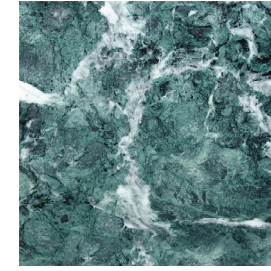
NERO MARQUINA

Marble available on select products only. Bespoke stone options can be sourced for certain consoles and dining tables, please inquire for further details.

* Available in 30 mm



INVISIBLE GREY



VERDE ALPI



ARABESCATO



CALACATTA ORO



CALACATTA CALDIA

Thank you for your purchase from Atelier Purcell.

Finished wood surfaces should be cleaned with a soft damp cloth, wiping in the direction of the grain. Dry with a soft cloth, again wiping in the direction of the grain. Do not apply harsh cleaners nor use abrasive materials for cleaning. Atelier Purcell assumes no responsibility for damage caused by use of cleaning or polishing agents. All finishes require specific maintenance to retain the original quality surface and sheen as follows:

OPEN GRAIN WOOD FINISHES

To clean, use a damp cloth and polish dry. Always thoroughly dry any cleaned wood surface. Regular dusting with a static cloth is recommended. Once a year, apply lemon oil to moisturize the wood surface. As with any fine wood furniture, never allow wet, damp or hot items to rest on the surface. Please use protective mats or trivets with hot items, wet items or dishes to protect the surface. Protect your wood piece from direct sunlight to avoid bleaching and drying out of natural oils.

FULL FILLED/HIGH SHEEN WOOD FINISHES

To clean, apply a product such as Zep Glass Foaming cleaner with a micro fiber cloth. Do not use paper towels or similar materials that may contain abrasives. Routinely, apply an automotive paste car wax coating. Routine polishing will reduce the chances for surface imperfections due to scratches and abrasions. Do not use ammonia, silicone or alcohol based cleaners.

LACQUER FINISHES

To clean, apply a product such as Zep Glass Foaming cleaner with a micro fiber cloth. Do not use paper towels or similar materials that contain micro abrasives. Once a year, apply an automotive paste car wax coating. Routine polishing will reduce the chances for surface imperfections due to scratches and abrasions. Do not use ammonia, silicone or alcohol based cleaners.

METAL FINISHES

Clean the area using a solution of mild soap and water. Do not use ammonia, silicone or alcohol based cleaners. Although metal is extremely hard and lasts for centuries, the patina is the most delicate element. Its long-term beauty depends upon proper placement and care. Patina finished metals would benefit from an annual coating of automotive paste wax. Do not allow moisture or alcohol to remain on metal surfaces. Small scratches or abrasions on blackened steel can be improved with a small application of wax based shoe polish.

ANILINE DYED LEATHER

Vegetable tanned, aniline dyed leather has a less finished open grain and can absorb oils more readily than leathers with a closed pore finish. To avoid staining, please take care to wipe spills immediately when possible. Over time open grain leather will develop a rich patina that will burnish and even out. Do not attempt to “wash out” stains or oil blemishes by rubbing as you may cause the dye to wear off unevenly. Never use household cleaners with a silicone base (such as Pledge), household cleaning products with ammonia or solvents or other products intended for wood finishes. A dry damp cloth is acceptable but take care to wipe surface completely dry. Should more thorough cleaning be required, please seek out the help of a leather cleaning professional or suitable leather cleaning product vendor specifically formulated for open grain vegetable tanned, aniline dyed leathers.

STONE

Stone can be classified into two categories: siliceous stones such as granite and slate are more durable and relatively easy to clean, while calcareous stones, such as marble, limestone and onyx, are more porous and sensitive to acidic cleaning products.

As stone is a natural material, markings and colour will vary. Stone tops are sealed or polished to be stain resistant. Many common foods and drinks contain acids that will etch or dull the surface of many stones. Use placemats or felt spots under china, ceramics, silver, or any other objects that may scratch the surface.

Clean stone surfaces with a soft cloth and a few drops of stone soap or a light detergent combined with warm water. Too much cleaner or soap may leave a film or cause streaks. Rinse the surface thoroughly after cleaning and dry with a soft cloth. For spills, blot with a soft cloth immediately to prevent the stain from being absorbed by the stone. Flush with water and mild soap and rinse well. Dry the area with a soft cloth.

We recommend that stained or soiled stone be professionally cleaned by a stone cleaner or a re-finisher.

GLASS AND CRYSTAL

Glass and crystal can be cleaned by wiping with a soft damp cloth or glass cleaner with no additives. Apply glass cleaner to a soft cloth rather than directly on to the fixture to avoid overspray that may damage other finishes.

LIGHTING SHADES

Care for the shade by dusting regularly with a soft cloth.

Heavy staining on our delicate shades usually cannot be cleaned.